

Mezzanine Inspection Report

Date: 10/20/14	Station Name: E01 Mount Vernon Square	Mezzanine #: 070	Completed By: Mike Butler
-----------------------	--	-------------------------	----------------------------------

Summary

Video scoping and pull string installation completed for communication duct in Upper Faregate Array; respective power duct was also video scoped. Communication duct had a partial obstruction from the kiosk to the first gate due to heavy debris. Video scoping and pull string installation was also completed in power duct between Kiosk and AFC Panel. However, there was extensive water damage and partial collapses found in power duct between Handhole 1, Handhole 2, Handhole 3 and the AFC Panel. The power duct between Kiosk and Handhole 1 is viable for further use.

The mezzanine floor was scanned to identify the existing ducts and new route between the Kiosk and AFC Panel. Scanning showed that there is a clear route from Handhole 1 to the AFC Panel. A new walker duct is proposed from Handhole 1 to the entrance of Room C204 - Handhole 1 will need to be modified to accommodate the connection of the new duct. Once in the back rooms, the duct will terminate at a new handhole and then transition to an overhead conduit (via a junction box) that will proceed along the top of the wall to the entrance of Electrical Room C207. The wall above the entrance to Room C207 will be core drilled to allow the new conduit to proceed overhead and feed into AFC Panel F.

Photos and drawings are for reference purposes only; see new schematic drawing/proposed pathway on last page.

Scoping of Faregate Array(s)

Task	Yes/No	Notes
Communications Duct – Upper Faregate Array (10 gates)		
Was video scoping completed for the entire duct run?	Yes	Refer to "WMATA Mt. Vernon Square Comm Faregate Video.avi"
Were pull strings installed at all faregates in the array?	Yes	
Were there any obstructions or blockages? Provide details of type and specific location.	Yes	Duct is partially obstructed between the Kiosk and first faregate with substantial debris.
Is the duct at capacity? Provide additional details about the dimensions of ducts and number of wires.	No	4" walker duct with less than 15 wires.
Power Duct - Upper Faregate Array (10 gates)		
Was video scoping completed for the entire duct run?	Yes	Refer to "WMATA Mt. Vernon Square Power Faregate Video.avi"
Were there any obstructions or blockages? Provide details of type and specific location.	No	
Is the duct at capacity? Provide additional details about the dimensions of ducts and number of wires.	No	6" walker duct with less than 20 wires.


Scoping of Power Duct - Kiosk to AFC Panel		
Task	Yes/No	Notes
Kiosk to Handhole 1 (Distance: 76')		
Was video scoping completed for the entire duct / conduit run?	Yes	Refer to "WMATA Mt. Vernon Square Power Kiosk to Handhole 1 Video.avi"
Was pull string installed?	Yes	
Were there any obstructions or blockages? Provide details of type and specific location.	No	
Is the duct / conduit at capacity? Provide additional details about the dimensions of duct / conduit and number of wires.	No	6" walker duct with less than 15 wires.
Handhole 1 to Handhole 2 (Distance: 62')		
Was video scoping completed for the entire duct / conduit run?	Yes	Refer to "WMATA Mt. Vernon Square Power Handhole 1 to Handhole 2 Video.avi"
Was pull string installed?	Yes	
Were there any obstructions or blockages? Provide details of type and specific location.	Yes	Partially collapsed duct at 50' from Handhole 1. Duct is in bad condition and has extensive water damage.
Is the duct / conduit at capacity? Provide additional details about the dimensions of duct / conduit and number of wires.	No	6" walker duct with less than 15 wires.
Handhole 2 to Handhole 3 (Distance: 19')		
Was video scoping completed for the entire duct / conduit run?	Yes	Refer to "WMATA Mt. Vernon Square Power Handhole 2 to Handhole 3 Video.avi"
Was pull string installed?	Yes	
Were there any obstructions or blockages? Provide details of type and specific location.	Yes	Partially collapsed duct at 10' from Handhole 2. Duct is in bad condition and has extensive water damage.
Is the duct / conduit at capacity? Provide additional details about the dimensions of duct / conduit and number of wires.	No	6" walker duct with less than 15 wires.
Handhole 3 to AFC Panel (Distance: 5')		
Was video scoping completed for the entire duct / conduit run?	Yes	Refer to "WMATA Mt. Vernon Square Power Handhole 3 to AFC Panel Video.avi"
Was pull string installed?	Yes	
Were there any obstructions or blockages? Provide details of type and specific location.	No	No obstructions, however duct is in bad condition and has extensive water damage.
Is the duct / conduit at capacity? Provide additional details about the dimensions of duct / conduit and number of wires.	No	6" walker duct with less than 15 wires.
Observations / Issues / Next Steps		
<p>The total distance of the proposed power feed between Kiosk and AFC Panel is 165', including 76' of existing walker duct, 36' of new walker duct and 53' of new conduit. Refer to attached drawings and photos for further details.</p> <p>The existing power feed between the Kiosk and AFC Panel is 162'.</p>		
Sign Off		
	GFP Representative	WMATA PRGM
Name:	Mike Butler	
Signature:		
Date:	02/17/15	

Photo #1: Existing duct between Kiosk and Handhole 1



Photo #2: Existing and proposed ducts on mezzanine floor

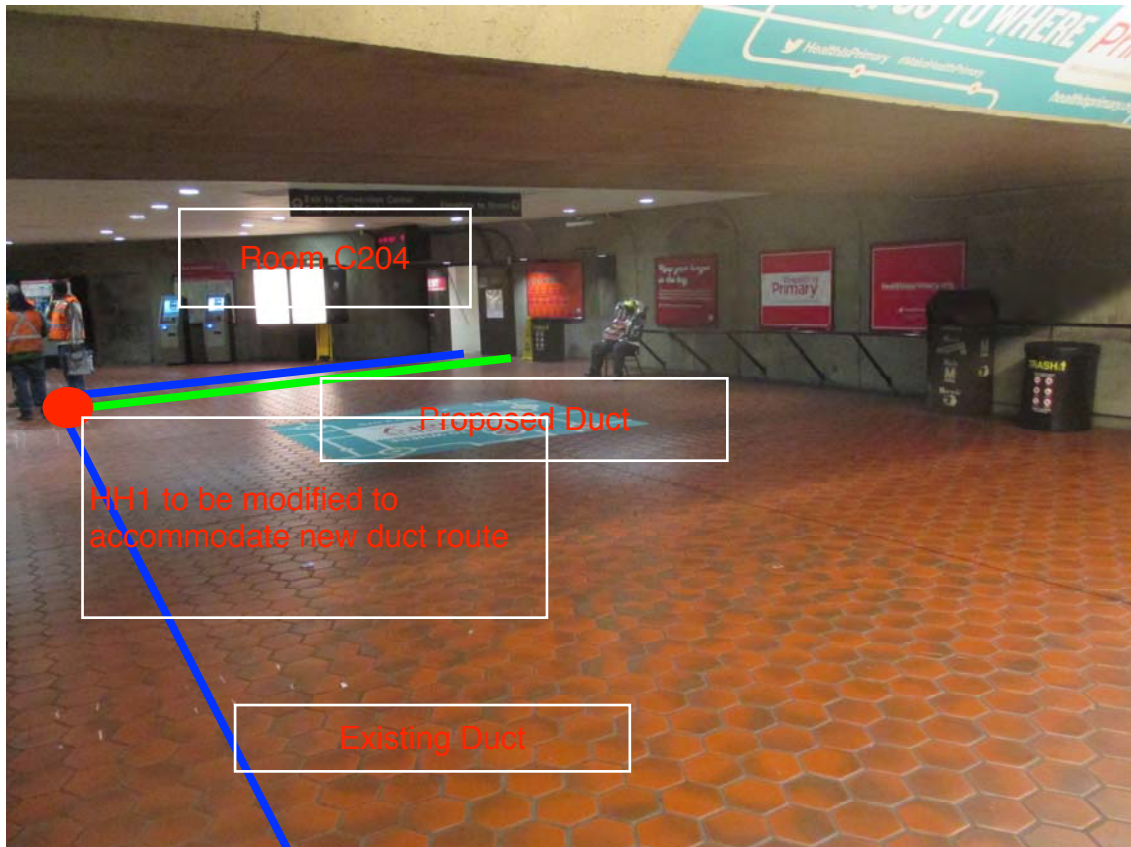


Photo #3: Existing duct route in back rooms.

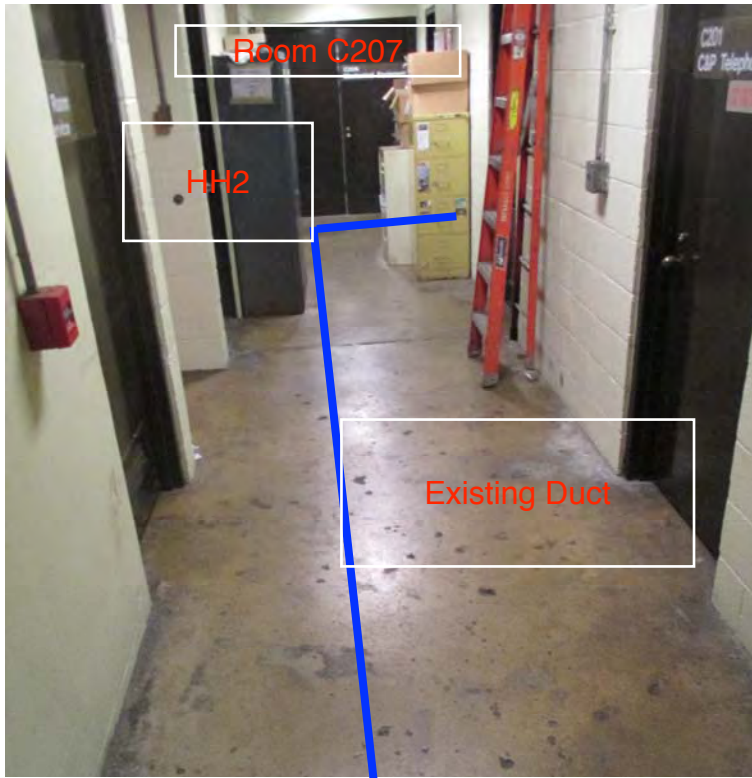


Photo #4: Existing duct route in back rooms.



Photo #5: Condition of Handhole 2.



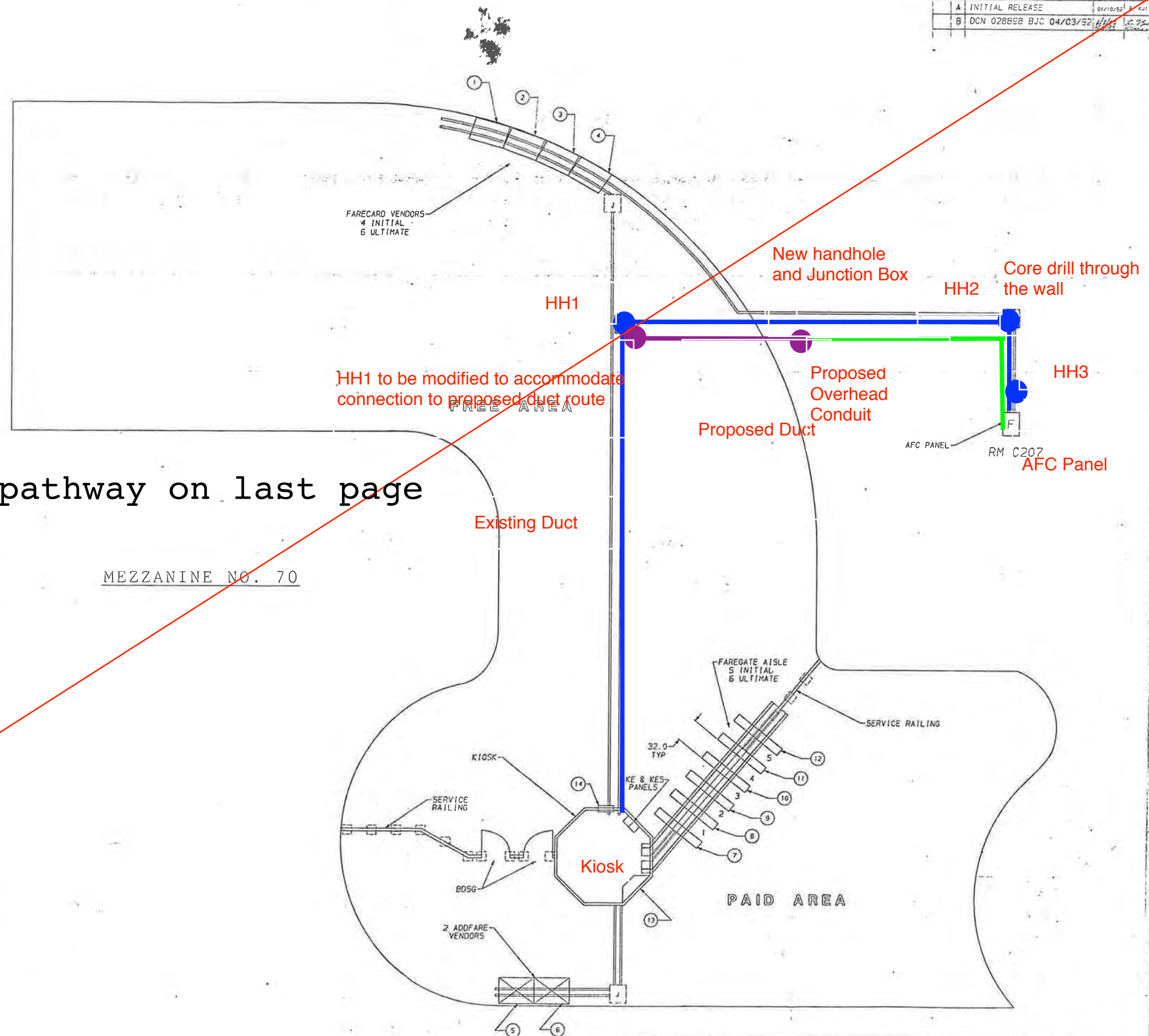
Photo #6: Condition of Handhole 3.



ZONE REV	DESCRIPTION	DATE	APPROVED
A	INITIAL RELEASE	01/10/22	R. KUIITE
B	DCN 028898 BJC 04/03/22	04/03/22	R. KUIITE

NOTES:

1. FOR VENDOR AND ADDFARE INSTALLATION SEE 931-4002.
2. FOR SMADS INSTALLATION SEE 931-4001.
3. FOR ENTRY, EXIT AND REVERSIBLE GATE INSTALLATION SEE 931-4003.
4. FOR BI-DIRECTIONAL SERVICE GATE INSTALLATION SEE 931-4005.
5. FOR A TYPICAL MEZZANINE INSTALLATION SEE 931-4000.
6. CIRCUIT BREAKERS WITH COMMON NEUTRAL:
2, 3 & 4; 6 & 7; 8, 9 & 10; 11 & 12.



new schematic drawing/proposed pathway on last page

MEZZANINE NO. 70

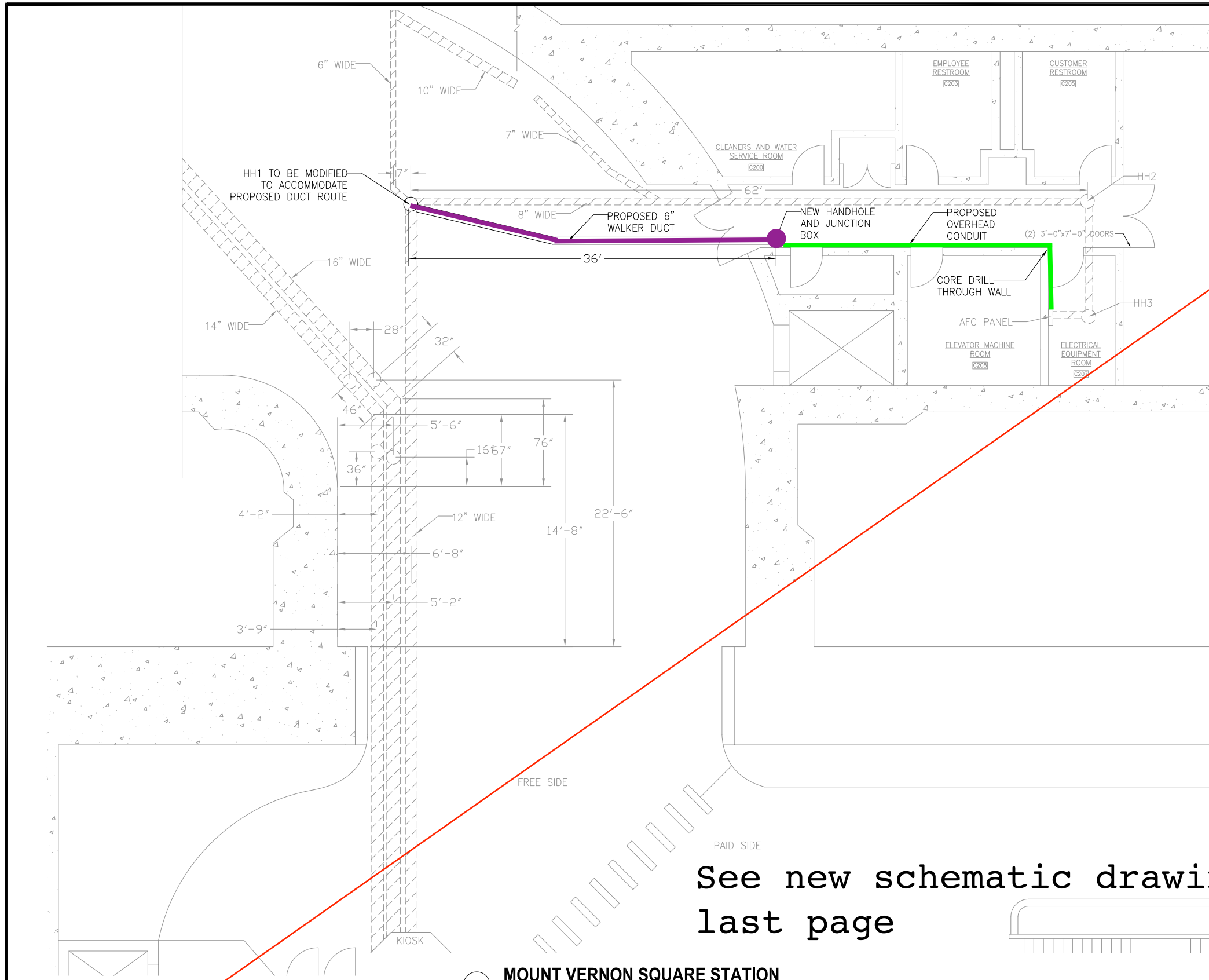
ITEM	NAME	S/N	PANEL AFC	KIOSK EMERGENCY BREAKER
1	VENDOR	1851	F	2
2	VENDOR	1810	F	3
3	VENDOR	1845	F	4
4	VENDOR	1832	F	5
5	ADDFARE	2814	F	6
6	ADDFARE	2815	F	7
7	ENTRY GATE	3810	F	8
8	REV. GATE	7844	F	9
9	REV. GATE	7843	F	10
10	REV. GATE	7809	F	11
11	REV. GATE	7807	F	12
12	EXIT GATE	4807	F	N/A
13	SMADS	8808	KE	1
14	CLOCK	98911	KES	8
15	EMERGENCY LT		KE	4

SEE SEPARATE PL WHEN ITEM NUMBERS ARE USED (REF DESIGNATOR MAY BE USED IN LIEU OF ITEM NUMBERS)	HOLE TOLERANCES ARE:	UNLESS OTHERWISE SPECIFIED DIMENSIONS ARE IN INCHES	FILE NO.	DATE	BY
NEXT ASSY: NONE	HOLE DIA TOLERANCES	TOLERANCES	FILE NO.	DATE	BY
DO NOT SCALE DRAWING	.0125 THRU .125	+ .004 - .001	FILE NO.	DATE	BY
	.126 THRU .250	+ .004 - .001	FILE NO.	DATE	BY
	.251 THRU .500	+ .004 - .001	FILE NO.	DATE	BY
	.501 THRU .750	+ .004 - .001	FILE NO.	DATE	BY
	.751 THRU 1.000	+ .004 - .001	FILE NO.	DATE	BY

CUBIC
COLLECTION GROUP
WESTERN DATA DIVISION

MT. VERNON STATION
 MEZZANINE LAYOUT

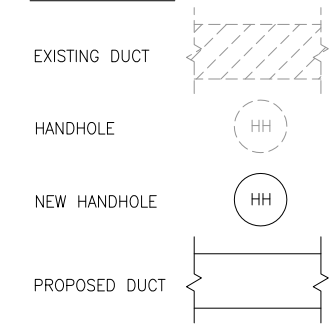
DATE: 04/03/22
 DRAWN BY: R. KUIITE
 CHECKED BY: R. KUIITE
 PROJECT NO: 931-4012
 SHEET NO: 1/25



PLAN NOTES:

1. DIMENSIONS ARE IN FEET AND INCHES.
2. DIMENSIONS ARE FOR REFERENCE ONLY.
3. EXISTING IN-FLOOR DUCTS/CONDUITS WERE IDENTIFIED USING A PORTABLE GPR SCANNING DEVICE.
4. THE SCANNING COVERAGE IS LIMITED TO THE MEZZANINE FLOOR ONLY.
5. GPR SCANNING HAS THE FOLLOWING LIMITATIONS: (i) 12 INCHES VISIBLE SCANNING DEPTH; (ii) VISIBILITY BEYOND CONGESTED OR NEAR SURFACE REINFORCEMENT LAYERS; (iii) DETECTION OF PVC AND OTHER NON-METALLIC OBJECTS (iv) DETERMINATION OF SIZE AND EXTENTS OF SUBSURFACE ANOMALIES SUCH AS SLAB VOIDS OR REBAR SIZES; AND (v) VISIBILITY WHEN VARIABLE MOISTURE CONDITIONS EXIST IN THE SUBSTRATE.

LEGEND:



See new schematic drawing/proposed pathway on last page

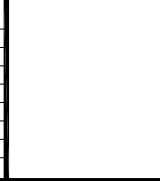
MOUNT VERNON SQUARE STATION
NOT TO SCALE

CONTRACT NO.
XXXXXX

DESIGNED	C. LOOSE	11-14
DRAWN	C. LOOSE	11-14
CHECKED	M. BUTLER	11-14
APPROVED		

REFERENCE DRAWINGS	
NUMBER	DESCRIPTION

REVISIONS		
DATE	BY	DESCRIPTION



WASHINGTON METROPOLITAN AREA TRANSIT AUTHORITY
DEPARTMENT OF TRANSIT INFRASTRUCTURE AND ENGINEERING SERVICES
OFFICE OF INFRASTRUCTURE RENEWAL PROGRAM
APPROVED _____

GFP A Gannett Fleming/Parsons JOINT VENTURE
SUBMITTED _____
PROJECT MANAGER

SCALE
NOT TO SCALE

15-NEPP-01
IN - FLOOR DUCT INSPECTIONS
E01 MOUNT VERNON SQUARE
PROPOSED ELECTRICAL DUCT PATH
DRAWING NO.
E01-E-100

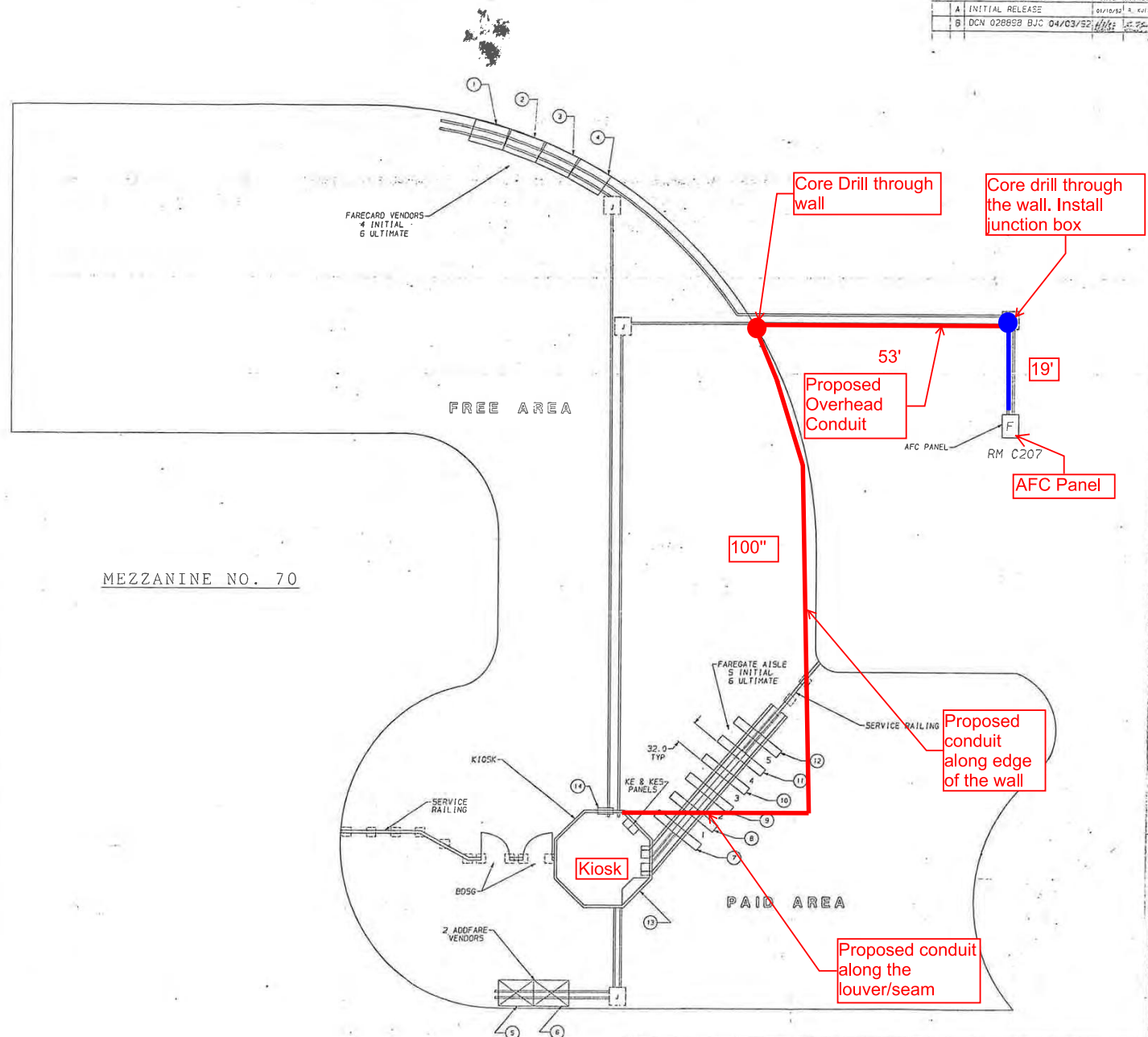
XXX

REV	DESCRIPTION	DATE	APPROVED
A	INITIAL RELEASE	01/10/15	R. KUIJE
B	DCN 028858 BJC 04/03/15	04/03/15	R. KUIJE

NOTES:

- FOR VENDOR AND ADDFARE INSTALLATION SEE 931-4002.
- FOR SHADE INSTALLATION SEE 931-4001.
- FOR ENTRY, EXIT AND REVERSIBLE GATE INSTALLATION SEE 931-4003.
- FOR BI-DIRECTIONAL SERVICE GATE INSTALLATION SEE 931-4005.
- FOR A TYPICAL MEZZANINE INSTALLATION SEE 931-4000.
- CIRCUIT BREAKERS WITH COMMON NEUTRAL:
2, 3 & 4; 6 & 7; 8, 9 & 10; 11 & 12.

ITEM	NAME	S/N	PANEL AFC	KIOSK EMERGENCY BREAKER
1	VENDOR	1851	F	2
2	VENDOR	1810	F	3
3	VENDOR	1845	F	4
4	VENDOR	1832	F	5
5	ADDFARE	2814	F	6
6	ADDFARE	2815	F	7
7	ENTRY GATE	3810	F	8
8	REV. GATE	7844	F	9
9	REV. GATE	7843	F	10
10	REV. GATE	7809	F	11
11	REV. GATE	7807	F	12
12	EXIT GATE	4807	F	N/A
13	SHADS	8808	KE	1
14	CLOCK	8811	KE	8
15	EMERGENCY LI		KE	4



SEE SEPARATE PL WHEN ITEM NUMBERS ARE USED OVER DESIGNATION MAY BE USED IN LIEU OF ITEM NUMBERS!	DATE: 04/03/15	SCALE: AS SHOWN	PROJECT: MT. VERNON STATION MEZZANINE LAYOUT
REV: NONE	DESIGNER: R. KUIJE	CHECKER: R. KUIJE	DATE: 04/03/15
DO NOT SCALE DRAWING	PROJECT NO: 931-4012	SCALE: 1/4" = 1'-0"	DATE: 04/03/15